



item No. 18204261

micro-volume cell holder



item No. 18204257

4 position cell holder(100mm)



item No. 18204255

4 position cell holder(10mm)



item No. 18204256

4 position cell holder(10-50mm)



item No. 18204262

Tube rack(ø8-ø22mm)



item No. 18204268 glass
18204277 quartz

Cuvette glass/quartz



item No. 18204265

Tungsten lamp



item No. 18204266

Deuterium lamp



item No. 18204263

Solid Specimen Holder



item No. 1820434

Bluetooth thermal printer



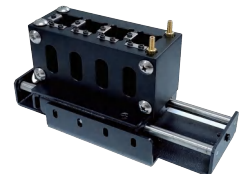
item No. 18204264

4 position cell holder(-10mm)



item No. 18204258

cylindrical cell holder(ø16mm)



item No. 18204260

10mm water-jacketed 4-cell holder
(for SP-V1100 & SP-UV1100)

SP-UV2101

Touch screen single beam Visible spectrophotometer



Features

- 10.1 inches high resolution TFT colored capacitive touch screen (1024*600) and windows graphic interface.
- Powerful functions like Photometric measurement, Quantitative measurement, Kinetics, Spectrum scan,
- DNA\Protein test, multi-wavelength test, etc
- In-house massive memory is capable of saving up to 1024M for test data & working curves.
- Various optional accessories, like automatic cell holder, thermostatic automatic sampler, adjustable micro cell holder, reflection accessory and integrating sphere, etc. which extend the application range of device and combine the requirements of common samples and special ones.
- Supports USB storage. The USB port can be used for data transfer, which is easily exported to Excel for further processing, analysis and storage.
- Socket type deuterium and tungsten lamp can make lamps switching without optics debugging and easy to be replaced.
- Follow GLP/GMP standards, user management, logging, data tracking and exporting, etc. are all available.

Specifications	SP-UV2101
Optical System	Single Beam, Grating 1200 lines/mm
Wavelength Range	190-1100 nm
Spectral Bandwidth	1nm
Wavelength Accuracy	±0.1nm@656.1nm, ±0.3nm@all
Wavelength Repeatability	≤0.1nm
Photometric Accuracy	0.2%T(0-100%T), ±0.002A(0-0.5A), ±0.004A(0.5-1A)
Photometric Repeatability	≤0.15%T (0-100%T), 0.001A(0-0.5A), 0.002A(0.5-1A)
Photometric Range	0-200%T, -0.3-3A, 0-9999C (0-9999F)
Stray Light	≤0.03%T@220nm, 360nm
Stability	±0.0003A/h @500 nm
Baseline Flatness	±0.001A
Noise	0.0005A@500nm
Work Mode	T, A, C, E
Scanning Speed	Hi, Med, Low (Max. 3000nm/min)
Wavelength Setting	Auto
Display	10.1" TFT Colored Capacitive Touch Screen
Light Source	Imported Deuterium & Tungsten lamp
Detector	Imported Silicon Photodiode
Cuvette Holder	10mm manual 4-cell holder
Output	USB drive, USB host, RS232
Power	AC 220V/50Hz or AC 110V/60Hz
Shipping Size	810*660*390mm
Gross Weight	26kg
Standard Accessories	10mm glass cuvette x 4, 10mm quartz cuvette x 2, Power cord, User's Manual, PC software

SP-UV2102

Touch screen single beam UV Vis spectrophotometer



Features

- 10.1 inches high resolution TFT colored capacitive touch screen (1024*600) and windows graphic interface.
- Powerful functions like Photometric measurement, Quantitative measurement, Kinetics, Spectrum scan, DNA\Protein test, multi-wavelength test, etc
- In-house massive memory is capable of saving up to 1024M for test data & working curves.
- Various optional accessories, like automatic cell holder, thermostatic automatic sampler, adjustable micro cell holder, reflection accessory and integrating sphere, etc. which extend the application range of device and combine the requirements of common samples and special ones.
- Supports USB storage. The USB port can be used for data transfer, which is easily exported to Excel for further processing, analysis and storage.
- Socket type deuterium and tungsten lamp can make lamps switching without optics debugging and easy to be replaced.
- Follow GLP/GMP standards, user management, logging, data tracking and exporting, etc. are all available.

Specifications	SP-UV2102
Optical System	Single Beam, Grating 1200 lines/mm
Wavelength Range	190-1100 nm
Spectral Bandwidth	2nm
Wavelength Accuracy	±0.1nm@656.1nm, ±0.3nm@all
Wavelength Repeatability	≤0.1nm
Photometric Accuracy	0.2%T(0~100%T), ±0.002A(0-0.5A), ±0.004A(0.5-1A)
Photometric Repeatability	≤0.15%T(0-100%T), 0.001A(0-0.5A), 0.002A(0.5-1A)
Photometric Range	0-200%T, -0.3~3A, 0-9999C (0-9999F)
Stray Light	≤0.03%T@220nm, 360nm
Stability	±0.0003A/h @500 nm
Baseline Flatness	±0.001A
Noise	0.0005A@500nm
Work Mode	T, A, C, E
Scanning Speed	Hi, Med, Low (Max. 3000nm/min)
Wavelength Setting	Auto
Display	10.1" TFT Colored Capacitive Touch Screen
Light Source	Imported Deuterium & Tungsten lamp
Detector	Imported Silicon Photodiode
Cuvette Holder	10mm manual 4-cell holder
Output	USB drive, USB host, RS232
Power	AC 220V/50Hz or AC 110V/60Hz
Shipping Size	810*660*390mm
Gross Weight	26kg
Standard Accessories	10mm glass cuvette x 4, 10mm quartz cuvette x 2, Power cord, User's Manual, PC software