

Temperature Controllable HotPlate

LabTech EH and EG hotplates are designed to meet laboratory daily heating requirements. Their unique features include different digital temperature controller and anticorrosive or stainless steel heating surface. They are good assistants for heating digestion, evaporation and acid distilling, and fully satisfy the heating requirements of different labs.



Biology



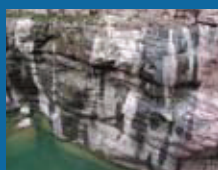
Environment



Pharmacy



Water



Geology



Food and Feed

EH Series HotPlates

- Large heating surface
- Fast and uniform heating
- Microprocessor chip for precise temperature control
- Special high anticorrosion coatings guarantee long life
- Durable and stable operation
- Compact design combined with an elegant look



EH20B



EH20A PLUS

Model	EH20APlus	EH20B	EH20D	EH35APlus	EH35B
Heating Power	2000W				
Temp. Control Mode(Digital Display)	Switch	PID(LCD)	PID (LED)	Switch	PID(LCD)
Temp. Stability	±5°C	±1°C	±0.2°C	±5°C	±2°C
Heating Mode	Electrothermal Component				
Temp. Range	Ambient ~ 200°C			Ambient ~ 350°C	
Material	Aluminium alloy with anticorrosive coating			Stainless steel	
Corrosion-Resistant	Excellent			Good	
Continuing Working Time	>48 hours				
Heating Area	400x300 mm				
Dimensions(LXWXH)	400x300x142 mm				
Weight	18 Kg				