

# DKT200-1N/2N/2D Dry Bath Incubator Series

## Dry Bath Incubator Series

### Introduction

Dry Bath Incubator is a new product controlled by a microcomputer, which can be widely used in sample preservation and reaction, DNA amplification and electrophoresis pre-denaturation, serum coagulation, etc.

### Feature

1. Fast heating speed, uniform heating, accurate temperature control, high stability, low energy consumption and no noise.
2. Built-in temperature deviation calibration function, automatic fault detection and buzzer alarm function.
3. Built in over-temperature protection device, safe and reliable, enhance the service life of the machine.
4. The product design is compact and the space occupied is small. High-definition color screen display, providing intuitive and clear visual experience
5. Simple or program temperature control mode is available, making the experiment more convenient
6. Sliding operation, light touch button, novel and fashionable.
7. The buzzer tone can be turned off, making the experiment quieter.
8. The metal block is easy to replace, easy to clean and disinfect. Protect samples from contamination.



DKT200-1N  
(1 standard block)



DKT200-2N  
(2 standard blocks)

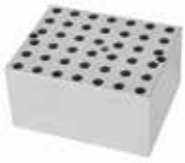


DKT200-2D  
(2 standard blocks)  
Independent temp. control

### Parameter

Model	DKT200-1N	DKT200-2N	DKT200-2D
Temp.Control Range	R.T.+5°C~150°C	R.T.+5°C~150°C	R.T.+5°C~150°C
Temp.Setting Range	5°C~150°C	5°C~150°C	5°C~150°C
Time Range	1min~99h59m (00:00 is continuous)	1min~99h59m (00:00 is continuous)	1min~99h59m (00:00 is continuous)
Block Temp. Stability@40~100°C	±0.5°C	±0.5°C	±0.5°C
Block Temp. Stability@>100°C	±1°C	±1°C	±1°C
Block Temp. Uniformity@40°C	±0.3°C	±0.3°C	±0.3°C
Block Temp. Uniformity@>40°C	±0.5°C	±0.5°C	±0.5°C
Temp. Display Accuracy	0.1°C	0.1°C	0.1°C
Heating Speed	≤15min(20°C~150°C)	≤15min(20°C~150°C)	≤15min(20°C~150°C)
Sample Capacity	1 standard block	2 standard blocks	2 standard blocks
Voltage	AC 220V/AC 110V 50Hz/60Hz	AC 220V/AC 110V 50Hz/60Hz	AC 220V/AC 110V 50Hz/60Hz
Power	200W	400W	400W
Fuse	250V, 2A/3A, Φ5×20	250V, 3A/6A, Φ5×20	250V, 3A/6A, Φ5×20
Dimension	W.285×D.225×H.95	W.285×D.225×H.95	W.285×D.225×H.95
Net Weight (kgs)	2.48kgs	2.64kgs	2.64kgs

## Accessories



DT01



DT02



DT03



DT04



DT05



DT06



DT07



DT08



DT09



DT10



DT11



DT12



DT13



DT14



DT15



DT16

## Accessories Parameter

Cat#	Spec	Dia. of hole	Hole bottom shape	Block dimension
DT01	6 mm x 42	6.5 mm	Round bottom	95.5 x 76.5 x 50 mm
DT02	7 mm x 42	7.5 mm	Round bottom	95.5 x 76.5 x 50 mm
DT03	10 mm x 20	10.5 mm	Round bottom	95.5 x 76.5 x 50 mm
DT04	12 mm x 20	12.5 mm	Round bottom	95.5 x 76.5 x 50 mm
DT05	13 mm x 20	13.5 mm	Round bottom	95.5 x 76.5 x 50 mm
DT06	15 mm x 12(7ml Centrifuge tube)	15.5 mm	Round bottom	95.5 x 76.5 x 50 mm
DT07	16 mm x 12(10ml/15ml Centrifuge tube))	6.5 mm	Round bottom	95.5 x 76.5 x 50 mm
DT08	19 mm x 12	19.5 mm	Round bottom	95.5 x 76.5 x 50 mm
DT09	20 mm x 6	20.5 mm	Round bottom	95.5 x 76.5 x 50 mm
DT10	26 mm x 6	26.5 mm	Round bottom	95.5 x 76.5 x 50 mm
DT11	28 mm x 4(50ml Centrifuge tube)	28.5 mm	Flat bottom	95.5 x 76.5 x 50 mm
DT12	40 mm x 2	40.5 mm	Round bottom	95.5 x 76.5 x 50 mm
DT13	0.5 ml x 42	8 mm	Cone bottom	95.5 x 76.5 x 50 mm
DT14	1.5 ml x 24	10.8 mm	Cone bottom	95.5 x 76.5 x 50 mm
DT15	2.0 ml x 24	10.8 mm	Round bottom	95.5 x 76.5 x 50 mm
DT16	0.2 ml x 48	6.1 mm	Cone bottom	95.5 x 76.5 x 50 mm
DT19	Customized	Customized	Customized	Customized